

ST. BARTS

SIGNATURE LEVEL

LIFE **S**TYLE
— SINCE 1984 —
H O M E S



4,649 SQ. FT.

3 BEDROOM + STUDY, 3 BATH, 3-CAR GARAGE

Floor plans and elevations are artist's concepts and may vary in precise detail from the plans and specifications. LifeStyle Homes reserves the right to change prices, plans, features, dimensions and specifications without notice. Elevations and floor plans are subject to Homeowner Association (HOA) restrictions. Subject to errors, omissions, deletions and availability. CBC1263082

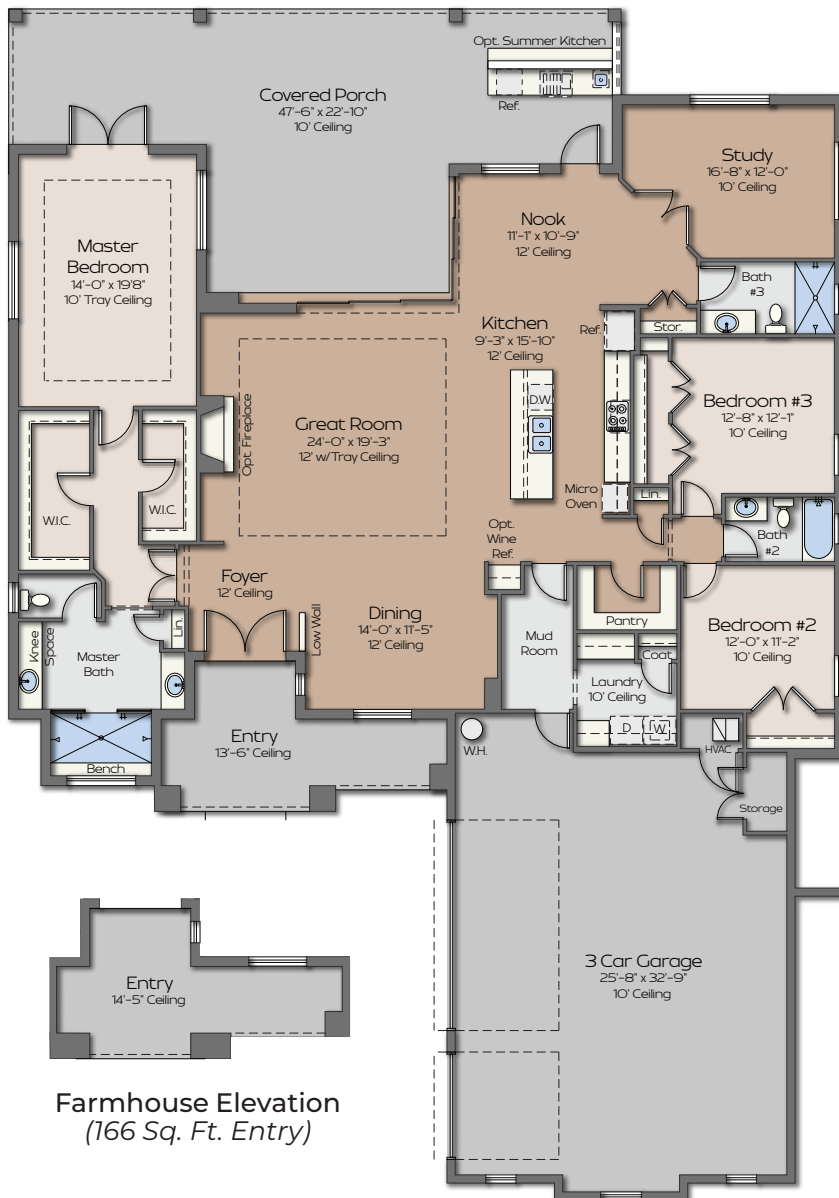


ST. BARTS

SIGNATURE LEVEL

65' width x 93' depth

LIFE **S**TYLE
SINCE 1984
HOMES



Farmhouse Elevation
(166 Sq. Ft. Entry)

SQUARE FOOTAGE

LIVING	2,757
GARAGE	959
COVERED PORCH	753
ENTRY	180
TOTAL SQ. FT.....	4,649



4,649 SQ. FT.

3 BEDROOM + STUDY, 3 BATH, 3-CAR GARAGE

Floor plans and elevations are artist's concepts and may vary in precise detail from the plans and specifications. LifeStyle Homes reserves the right to change prices, plans, features, dimensions and specifications without notice. Elevations and floor plans are subject to Homeowner Association (HOA) restrictions. Subject to errors, omissions, deletions and availability. CBC1263082

