

MONTEREY

LIFE **S**TYLE
— SINCE 1984 —
H O M E S



3,685 SQ. FT.

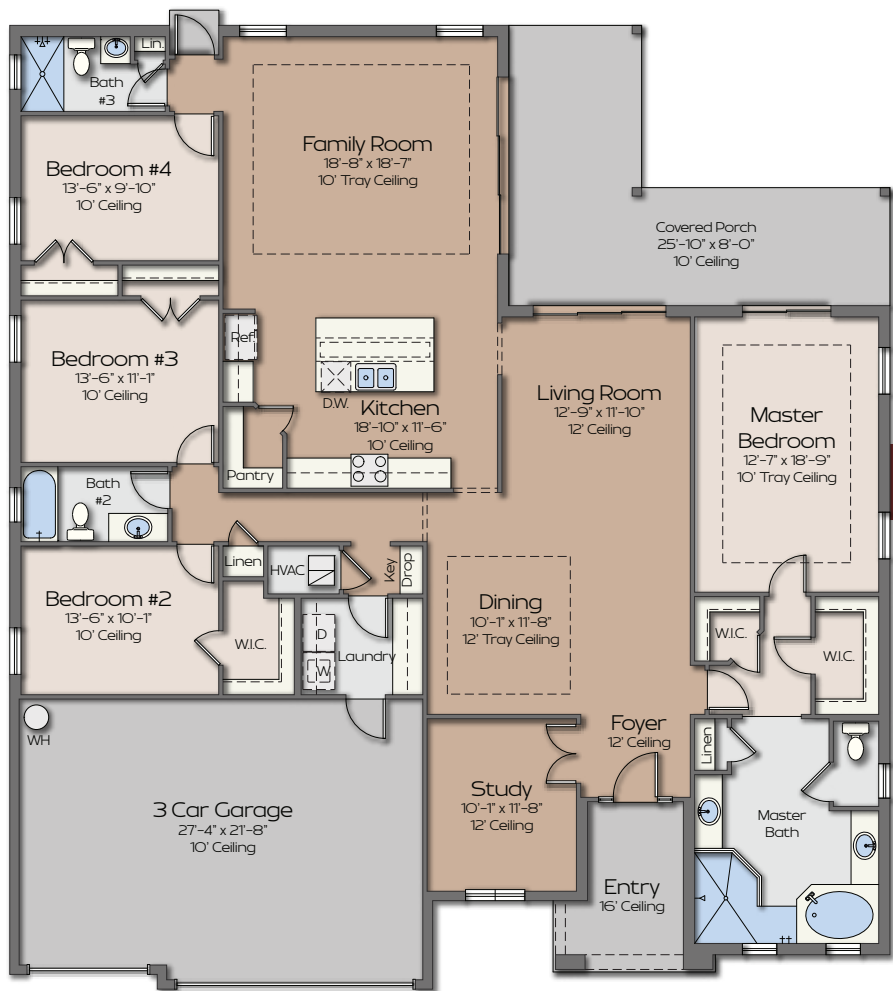
4 BEDROOM + STUDY, 3 BATH, 3-CAR GARAGE

Floor plans and elevations are artist's concepts and may vary in precise detail from the plans and specifications. LifeStyle Homes reserves the right to change prices, plans, features, dimensions and specifications without notice. Elevations and floor plans are subject to Homeowner Association (HOA) restrictions. Subject to errors, omissions, deletions and availability. CBC1263082



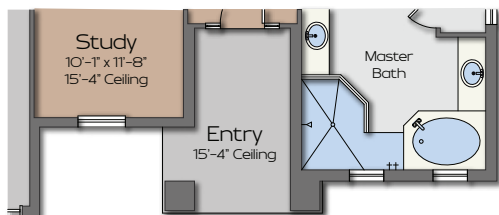
MONTEREY

60' width x 68' depth

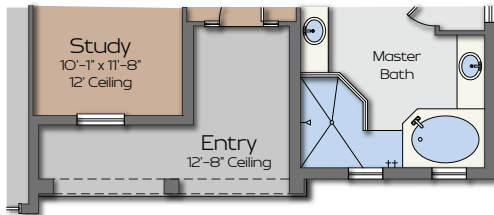


SQUARE FOOTAGE

LIVING	2,676
GARAGE	621
COVERED PORCH	305
ENTRY	83
<hr/>	
TOTAL SQ. FT.....	3,685



Coastal Elevation
(106 Sq. Ft. Entry)



Farmhouse Elevation
(121 Sq. Ft. Entry)



3,685 SQ. FT.

4 BEDROOM + STUDY, 3 BATH, 3-CAR GARAGE

Floor plans and elevations are artist's concepts and may vary in precise detail from the plans and specifications. LifeStyle Homes reserves the right to change prices, plans, features, dimensions and specifications without notice. Elevations and floor plans are subject to Homeowner Association (HOA) restrictions. Subject to errors, omissions, deletions and availability. CBC1263082

